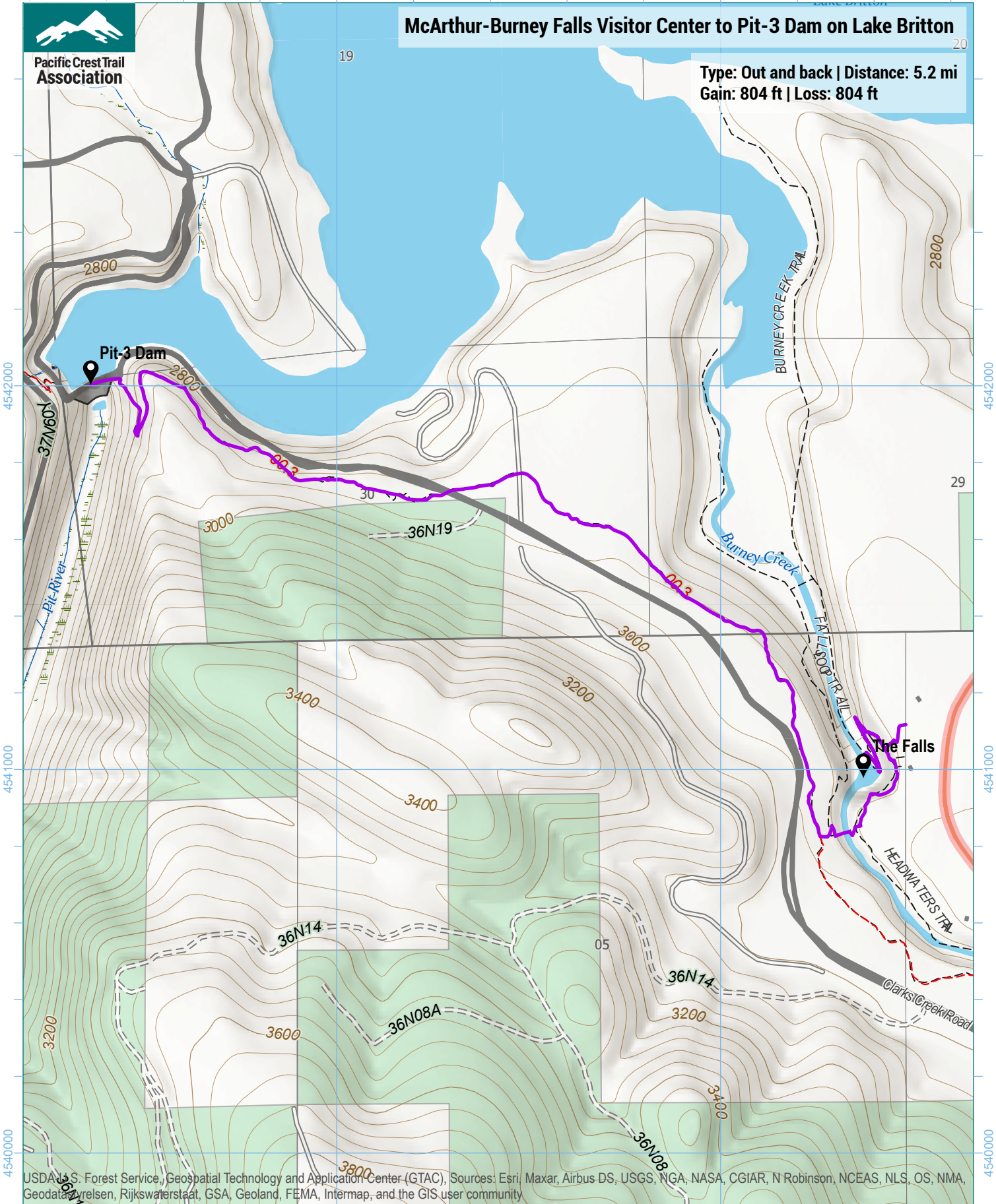




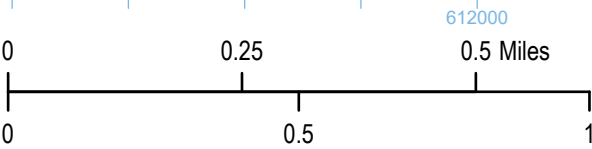
Pacific Crest Trail Association

McArthur-Burney Falls Visitor Center to Pit-3 Dam on Lake Britton

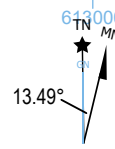
Type: Out and back | Distance: 5.2 mi
Gain: 804 ft | Loss: 804 ft



USDA U.S. Forest Service, Geospatial Technology and Application Center (GTAC), Sources: Esri, Maxar, Airbus-DS, USGS, NGA, NASA, CGIAR, N Robinson, NCEAS, NLS, OS, NMA, Geodata, Rijkswaterstaat, GSA, Geoland, FEMA, Intermap, and the GIS user community



1 inch equals 1,083 feet
1:13,000
WGS 1984 UTM Zone 10N



Trip data by PCTA
Basemap by US Forest Service
Contour interval: 40ft